

Calcul mental : fiche 29

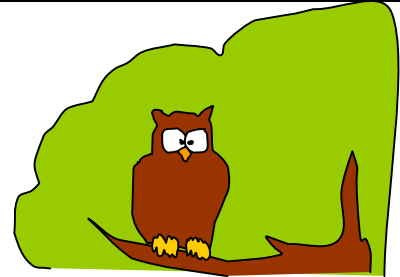
© GRé10 / MJ 2014

Effectue ces opérations :

livrets 2, 10, 5

4P

$10 + 6 =$	$5 + 4 =$	$5 + 8 =$
$4 + 9 =$	$3 + 17 =$	$2 + 12 =$
$7 + 8 =$	$8 + 3 =$	$7 + 7 =$
$12 + 5 =$	$6 + 9 =$	$6 + 13 =$
$8 + 11 =$	$7 + 14 =$	$3 + 15 =$



$10 - 8 =$	$13 - 3 =$	$9 - 7 =$
$17 - 9 =$	$14 - 6 =$	$15 - 9 =$
$15 - 5 =$	$17 - 8 =$	$14 - 3 =$
$13 - 2 =$	$11 - 6 =$	$15 - 11 =$
$10 - 6 =$	$7 - 4 =$	$8 - 7 =$

$8 \times 2 =$	$8 \times 2 =$	$3 \times 2 =$
$3 \times 5 =$	$9 \times 5 =$	$7 \times 2 =$
$9 \times 2 =$	$7 \times 5 =$	$6 \times 2 =$
$6 \times 5 =$	$4 \times 10 =$	$4 \times 5 =$
$5 \times 5 =$	$4 \times 2 =$	$8 \times 5 =$

Quelle heure est-il ? (les pointillés t'indiquent quel nombre lire pour les heures)

<p>matin</p> <p>.....hmin</p>	<p>matin</p> <p>.....hmin</p>
<p>matin</p> <p>.....hmin</p>	<p>matin</p> <p>.....hmin</p>

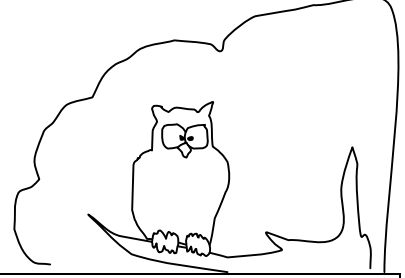
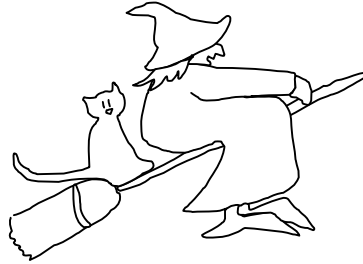
Calcul mental : fiche 29

© GRé10 / MJ 2014

Effectue ces opérations :

livrets 2, 10, 5 4P

$10 + 6 =$	$5 + 4 =$	$5 + 8 =$
$4 + 9 =$	$3 + 17 =$	$2 + 12 =$
$7 + 8 =$	$8 + 3 =$	$7 + 7 =$
$12 + 5 =$	$6 + 9 =$	$6 + 13 =$
$8 + 11 =$	$7 + 14 =$	$3 + 15 =$



$10 - 8 =$	$13 - 3 =$	$9 - 7 =$
$17 - 9 =$	$14 - 6 =$	$15 - 9 =$
$15 - 5 =$	$17 - 8 =$	$14 - 3 =$
$13 - 2 =$	$11 - 6 =$	$15 - 11 =$
$10 - 6 =$	$7 - 4 =$	$8 - 7 =$

$8 \times 2 =$	$8 \times 2 =$	$3 \times 2 =$
$3 \times 5 =$	$9 \times 5 =$	$7 \times 2 =$
$9 \times 2 =$	$7 \times 5 =$	$6 \times 2 =$
$6 \times 5 =$	$4 \times 10 =$	$4 \times 5 =$
$5 \times 5 =$	$4 \times 2 =$	$8 \times 5 =$

Quelle heure est-il ? (les pointillés t'indiquent quel nombre lire pour les heures)

<p>matin</p> <p>.....hmin</p>	<p>matin</p> <p>.....hmin</p>
<p>matin</p> <p>.....hmin</p>	<p>matin</p> <p>.....hmin</p>

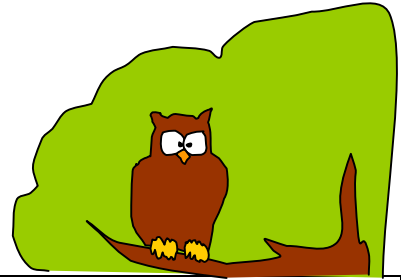
Calcul mental : fiche 29

© GRé10 / MJ 2014

Effectue ces opérations :

livrets 2, 3, 4, 5, 6, 7, 9, 10 **5P**

$20 + 60 =$	$35 + 40 =$	$50 + 8 =$
$40 + 60 =$	$30 + 70 =$	$25 + 25 =$
$72 + 8 =$	$20 + 25 =$	$75 + 75 =$
$14 + 65 =$	$40 + 19 =$	$16 + 80 =$
$28 + 36 =$	$76 + 14 =$	$35 + 35 =$



$10 - 8 =$	$13 - 3 =$	$9 - 7 =$
$17 - 9 =$	$14 - 6 =$	$15 - 9 =$
$15 - 5 =$	$17 - 8 =$	$15 - 10 =$
$23 - 2 =$	$26 - 6 =$	$25 - 10 =$
$80 - 10 =$	$75 - 4 =$	$48 - 7 =$

$7 \times 6 =$	$8 \times 6 =$	$3 \times 9 =$
$8 \times 7 =$	$9 \times 6 =$	$7 \times 7 =$
$4 \times 4 =$	$7 \times 9 =$	$6 \times 3 =$
$6 \times 9 =$	$2 \times 10 =$	$4 \times 6 =$
$5 \times 6 =$	$4 \times 7 =$	$5 \times 5 =$

Quelle heure est-il ?

<p>matin</p> <p>.....hmin</p> <p>après-midi</p> <p>.....hmin</p>			<p>matin</p> <p>.....hmin</p> <p>après-midi</p> <p>.....hmin</p>
<p>matin</p> <p>.....hmin</p> <p>après-midi</p> <p>.....hmin</p>			<p>matin</p> <p>.....hmin</p> <p>après-midi</p> <p>.....hmin</p>

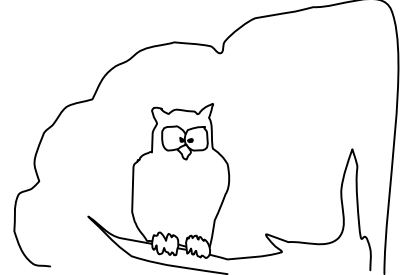
Calcul mental : fiche 29

© GRé10 / MJ 2014

Effectue ces opérations :

livrets 2, 3, 4, 5, 6, 7, 9, 10 **5P**

$20 + 60 =$	$35 + 40 =$	$50 + 8 =$
$40 + 60 =$	$30 + 70 =$	$25 + 25 =$
$72 + 8 =$	$20 + 25 =$	$75 + 75 =$
$14 + 65 =$	$40 + 19 =$	$16 + 80 =$
$28 + 36 =$	$76 + 14 =$	$35 + 35 =$



$10 - 8 =$	$13 - 3 =$	$9 - 7 =$
$17 - 9 =$	$14 - 6 =$	$15 - 9 =$
$15 - 5 =$	$17 - 8 =$	$15 - 10 =$
$23 - 2 =$	$26 - 6 =$	$25 - 10 =$
$80 - 10 =$	$75 - 4 =$	$48 - 7 =$

$7 \times 6 =$	$8 \times 6 =$	$3 \times 9 =$
$8 \times 7 =$	$9 \times 6 =$	$7 \times 7 =$
$4 \times 4 =$	$7 \times 9 =$	$6 \times 3 =$
$6 \times 9 =$	$2 \times 10 =$	$4 \times 6 =$
$5 \times 6 =$	$4 \times 7 =$	$5 \times 5 =$

Quelle heure est-il ?

<p>matin</p> <p>.....hmin</p> <p>après-midi</p> <p>.....hmin</p>			<p>matin</p> <p>.....hmin</p> <p>après-midi</p> <p>.....hmin</p>
<p>matin</p> <p>.....hmin</p> <p>après-midi</p> <p>.....hmin</p>			<p>matin</p> <p>.....hmin</p> <p>après-midi</p> <p>.....hmin</p>

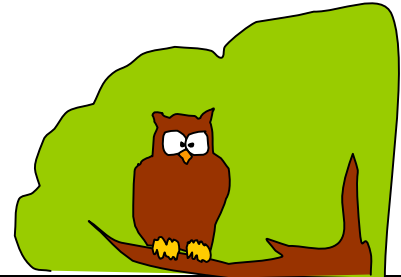
Calcul mental : fiche 29

© GRe10 / MJ 2014

Effectue ces opérations :

6P

$20 + 60 =$	$35 + 40 =$	$50 + 8 =$
$40 + 60 =$	$30 + 70 =$	$25 + 25 =$
$72 + 8 =$	$20 + 25 =$	$75 + 75 =$
$14 + 65 =$	$40 + 19 =$	$16 + 80 =$
$28 + 36 =$	$76 + 14 =$	$35 + 35 =$



$10 - 8 =$	$13 - 3 =$	$9 - 7 =$
$17 - 9 =$	$14 - 6 =$	$15 - 9 =$
$15 - 5 =$	$17 - 8 =$	$15 - 10 =$
$23 - 2 =$	$26 - 6 =$	$25 - 10 =$
$80 - 10 =$	$75 - 4 =$	$48 - 7 =$

$7 \times 6 =$	$8 \times 8 =$	$3 \times 9 =$
$8 \times 7 =$	$9 \times 6 =$	$7 \times 7 =$
$2 \times 8 =$	$7 \times 9 =$	$6 \times 3 =$
$6 \times 9 =$	$2 \times 10 =$	$4 \times 6 =$
$5 \times 6 =$	$4 \times 7 =$	$4 \times 8 =$

Quelle heure est-il ?

<p>matin</p> <p>.....hmin</p> <p>après-midi</p> <p>.....hmin</p>			<p>matin</p> <p>.....hmin</p> <p>après-midi</p> <p>.....hmin</p>
<p>matin</p> <p>.....hmin</p> <p>après-midi</p> <p>.....hmin</p>			<p>matin</p> <p>.....hmin</p> <p>après-midi</p> <p>.....hmin</p>

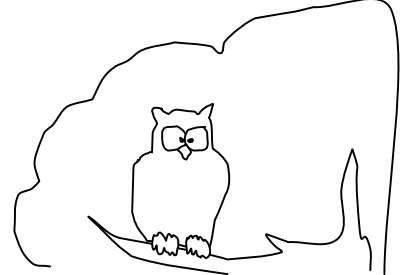
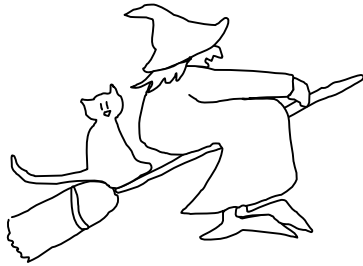
Calcul mental : fiche 29

© GRe10 / MJ 2014

Effectue ces opérations :

6P

$20 + 60 =$	$35 + 40 =$	$50 + 8 =$
$40 + 60 =$	$30 + 70 =$	$25 + 25 =$
$72 + 8 =$	$20 + 25 =$	$75 + 75 =$
$14 + 65 =$	$40 + 19 =$	$16 + 80 =$
$28 + 36 =$	$76 + 14 =$	$35 + 35 =$



$10 - 8 =$	$13 - 3 =$	$9 - 7 =$
$17 - 9 =$	$14 - 6 =$	$15 - 9 =$
$15 - 5 =$	$17 - 8 =$	$15 - 10 =$
$23 - 2 =$	$26 - 6 =$	$25 - 10 =$
$80 - 10 =$	$75 - 4 =$	$48 - 7 =$

$7 \times 6 =$	$8 \times 8 =$	$3 \times 9 =$
$8 \times 7 =$	$9 \times 6 =$	$7 \times 7 =$
$2 \times 8 =$	$7 \times 9 =$	$6 \times 3 =$
$6 \times 9 =$	$2 \times 10 =$	$4 \times 6 =$
$5 \times 6 =$	$4 \times 7 =$	$4 \times 8 =$

Quelle heure est-il ?

<p>matin</p> <p>.....hmin</p> <p>après-midi</p> <p>.....hmin</p>			<p>matin</p> <p>.....hmin</p> <p>après-midi</p> <p>.....hmin</p>
<p>matin</p> <p>.....hmin</p> <p>après-midi</p> <p>.....hmin</p>			<p>matin</p> <p>.....hmin</p> <p>après-midi</p> <p>.....hmin</p>