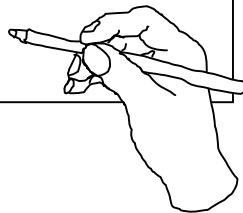
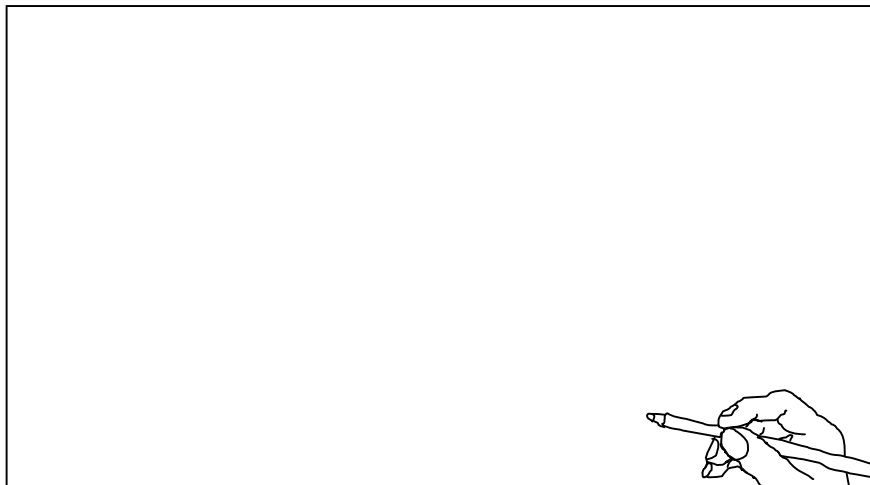
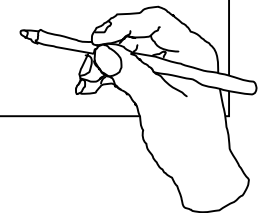
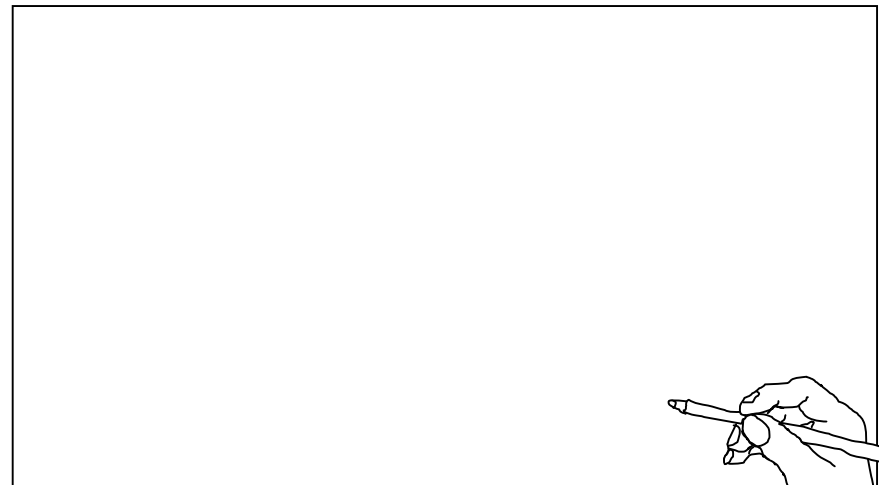


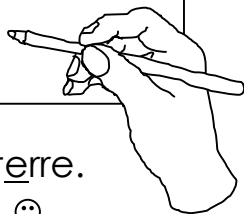
Dessine : phrases à illustrer (a,l,e,m,i,u,r,f,o,n,v,s,j,z,d,t)



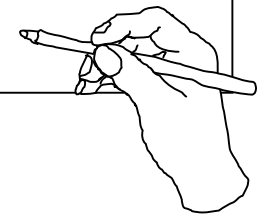
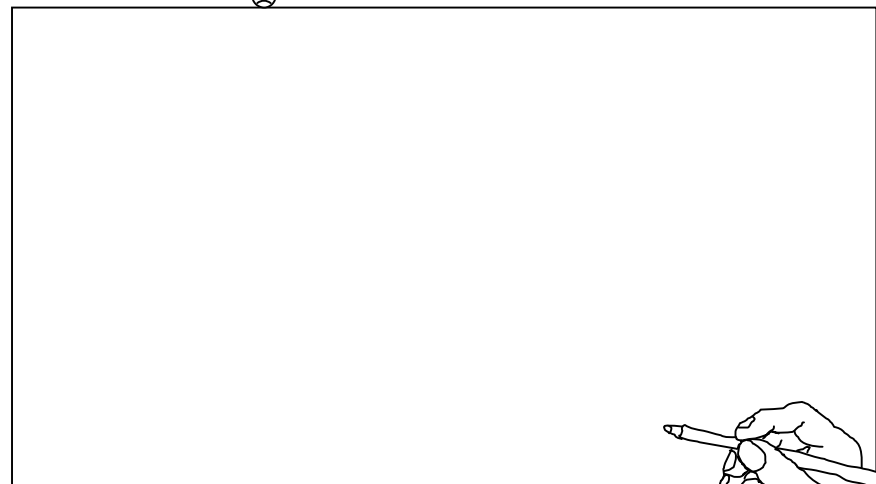
La tortue adore la salade.



La vis est tordue.  
☹

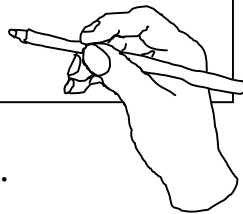
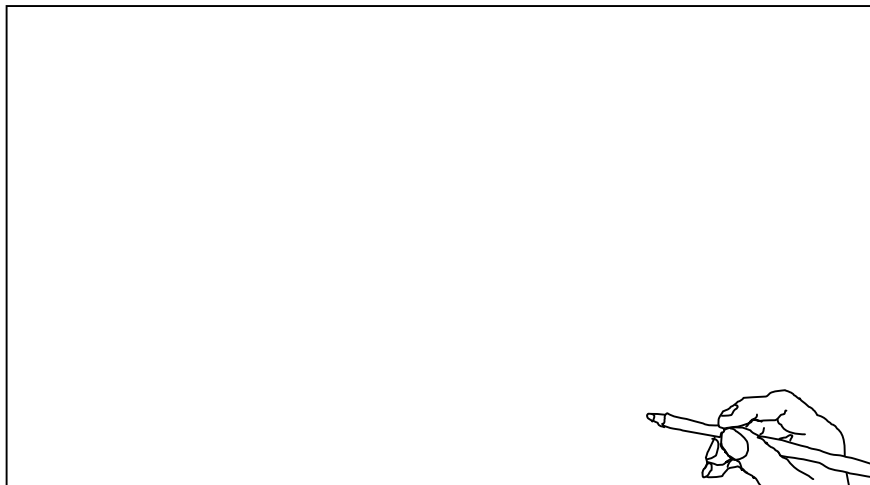


Le râteau est sur le tas de terre.  
○ ☹ ☹

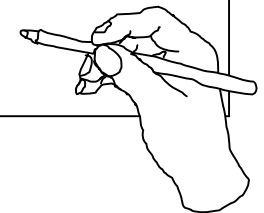


Le stylo flotte sur l'eau.  
○

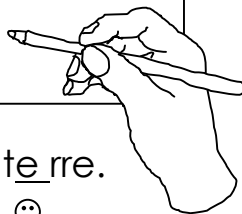
Dessine : phrases à illustrer (a,l,e,m,i,u,r,f,o,n,v,s,j,z,d,t)



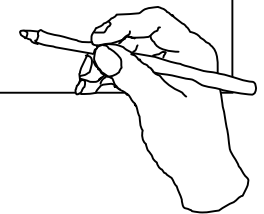
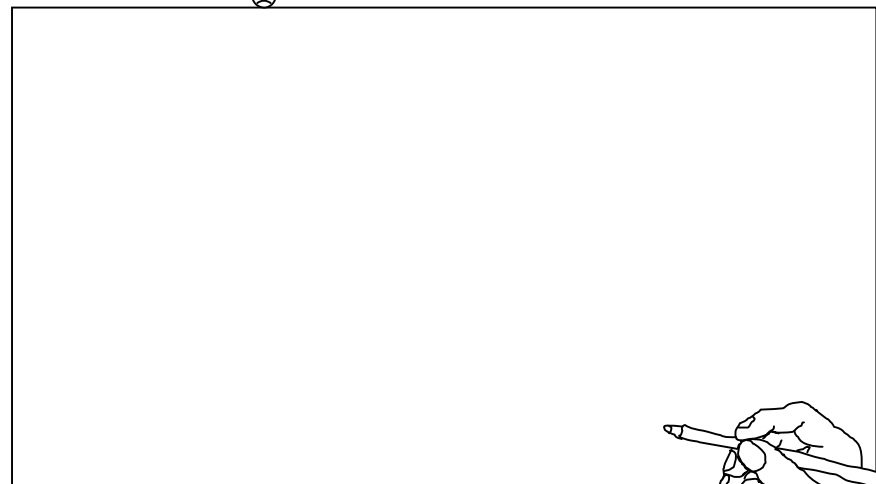
La tortue adore la salade.



La vis est tor due.  
☹



Le râteau est sur le tas de terre.  
○ ☹ ○



Le stylo flo tte sur l'eau.  
○