



Additions-soustractions :

1. $1 + \dots = 8$
2. $6 + \dots = 8$
3. $10 - 7 = \dots$
4. $5 - \dots = 3$
5. $7 + 2 = \dots$
6. $\dots + 8 = 10$
7. $3 + 2 = \dots$
8. $7 - 5 = \dots$
9. $\dots - 2 = 5$
10. $4 + \dots = 9$
11. $\dots + 9 = 10$
12. $8 - 7 = \dots$

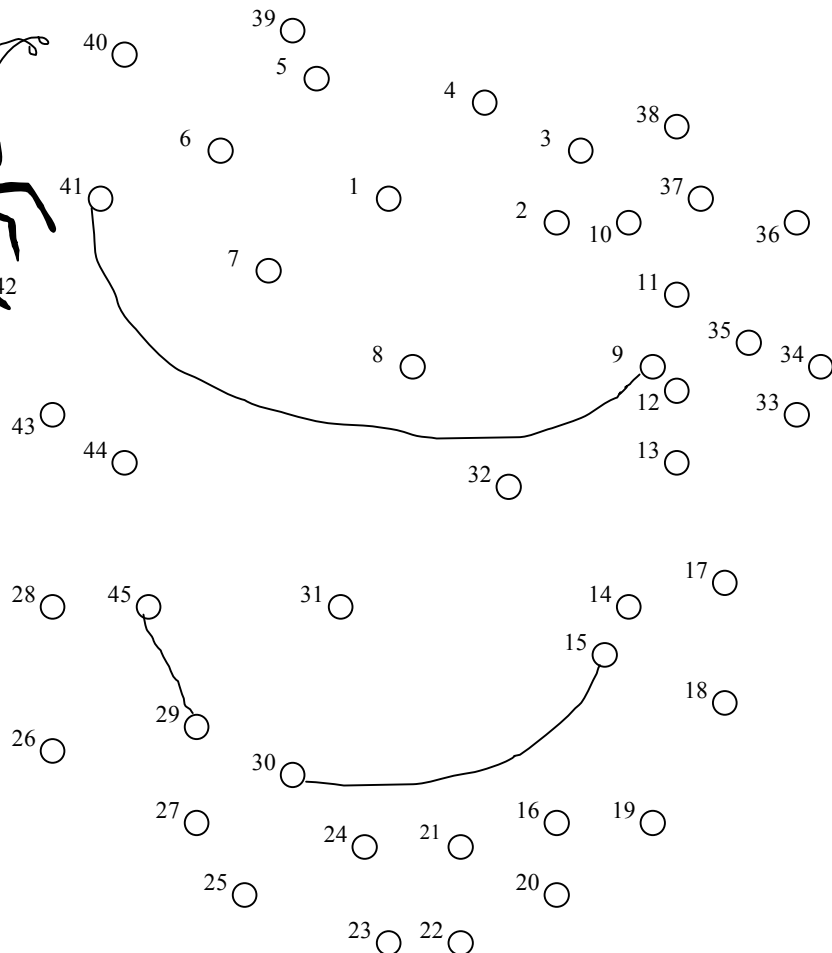
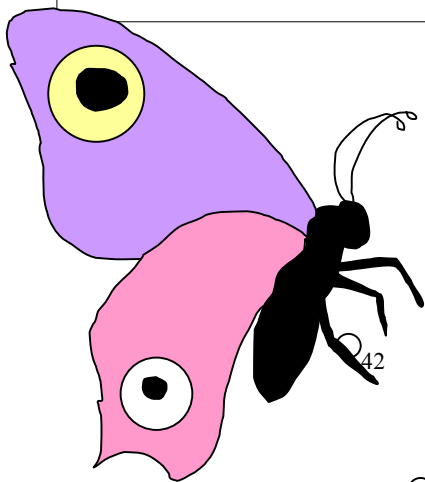
Additions-soustractions :

1. $4 + \dots = 6$
2. $6 + 4 = \dots$
3. $6 - \dots = 6$
4. $6 - 3 = \dots$
5. $8 + \dots = 10$
6. $\dots + 10 = 10$
7. $8 - 5 = \dots$
8. $10 + \dots = 15$
9. $4 + \dots = 7$
10. $\dots - 1 = 5$
11. $10 - 7 = \dots$
12. $\dots + 6 = 8$

Additions-soustractions :

1. $10 - \dots = 6$
2. $10 - 4 = \dots$
3. $\dots + 2 = 6$
4. $3 + \dots = 9$
5. $5 + 4 = \dots$
6. $3 + \dots = 5$
7. $\dots + 5 = 9$
8. $2 + \dots = 6$
9. $7 + 0 = \dots$
10. $\dots - 8 = 4$
11. $0 + \dots = 7$
12. $7 - 2 = \dots$

27



Relie les points de 45 à 1...

Calcul mental : fiche 2



Additions-soustractions :

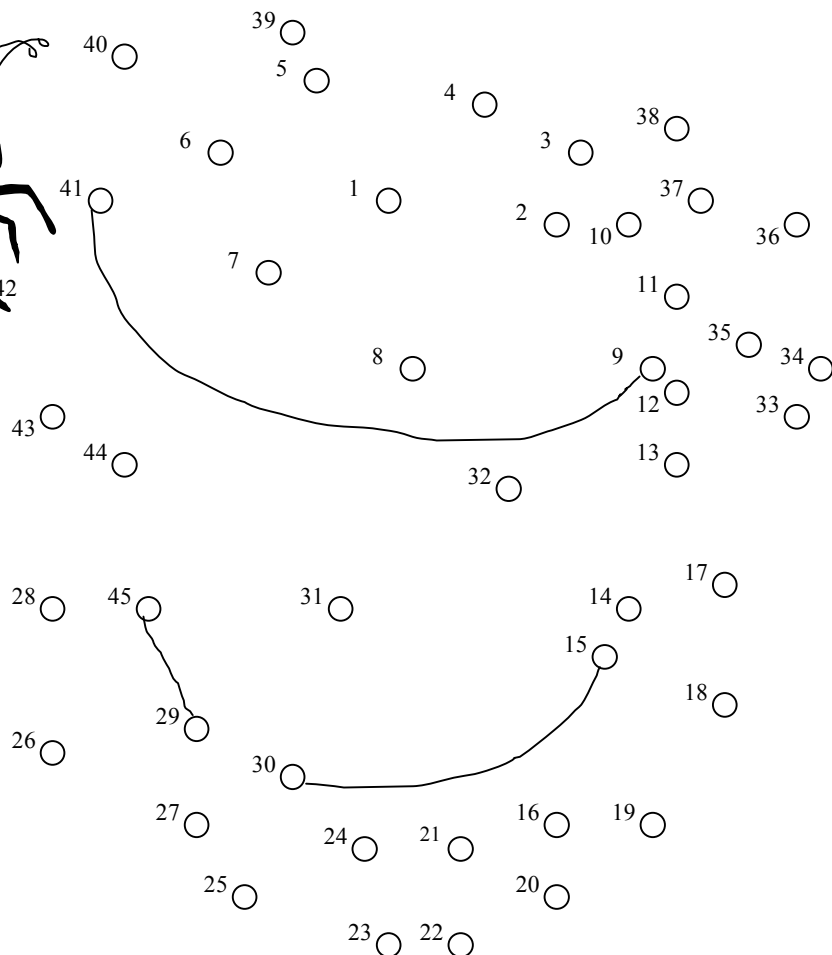
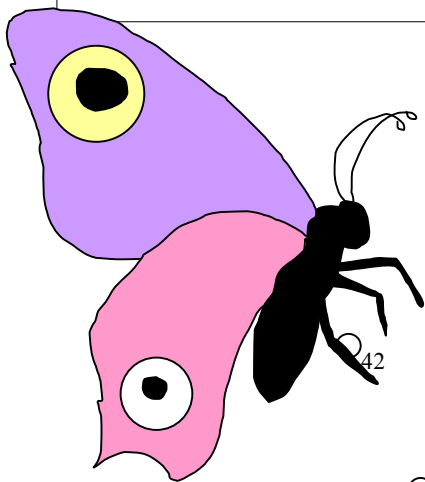
1. $11 + \dots = 18$
2. $6 + \dots = 8$
3. $11 - 7 = \dots$
4. $15 - \dots = 13$
5. $7 + 4 = \dots$
6. $\dots + 8 = 10$
7. $13 + 2 = \dots$
8. $17 - 5 = \dots$
9. $\dots - 2 = 5$
10. $17 + \dots = 22$
11. $\dots + 9 = 15$
12. $16 - 7 = \dots$

Additions-soustractions :

1. $14 + \dots = 22$
2. $6 + 5 = \dots$
3. $16 - \dots = 6$
4. $6 - 3 = \dots$
5. $18 + \dots = 24$
6. $\dots + 10 = 11$
7. $18 - 8 = \dots$
8. $11 + \dots = 15$
9. $4 + \dots = 7$
10. $\dots - 1 = 15$
11. $20 - 1 = \dots$
12. $\dots + 7 = 11$

Additions-soustractions :

1. $12 - \dots = 6$
2. $11 - 4 = \dots$
3. $\dots + 10 = 16$
4. $14 + \dots = 23$
5. $15 + 4 = \dots$
6. $3 + \dots = 12$
7. $\dots + 5 = 13$
8. $11 + \dots = 16$
9. $7 + 6 = \dots$
10. $\dots - 8 = 4$
11. $13 + \dots = 14$
12. $17 - 2 = \dots$



Relie les points de 45 à 1...



Additions-soustractions :



1. $11 + \dots = 18$
2. $6 + \dots = 8$
3. $11 - 7 = \dots$
4. $15 - \dots = 13$
5. $7 + 4 = \dots$
6. $\dots + 8 = 10$
7. $13 + 2 = \dots$
8. $17 - 5 = \dots$
9. $\dots - 2 = 5$
10. $17 + \dots = 22$
11. $\dots + 9 = 15$
12. $16 - 7 = \dots$

Multiplications : (2,5,10)

1. $1 \times 0 = \dots$
2. $2 \times 2 = \dots$
3. $9 \times 10 = \dots$
4. $10 \times 5 = \dots$
5. $3 \times 5 = \dots$
6. $4 \times 10 = \dots$
7. $6 \times 2 = \dots$
8. $6 \times 10 = \dots$
9. $5 \times 5 = \dots$
10. $4 \times 2 = \dots$
11. $1 \times 10 = \dots$
12. $7 \times 5 = \dots$



Additions-soustractions :

1. $14 + \dots = 22$
2. $6 + 5 = \dots$
3. $16 - \dots = 6$
4. $6 - 3 = \dots$
5. $18 + \dots = 24$
6. $\dots + 10 = 11$
7. $18 - 8 = \dots$
8. $11 + \dots = 15$
9. $4 + \dots = 7$
10. $\dots - 1 = 15$
11. $20 - 1 = \dots$
12. $\dots + 7 = 11$

Multiplications : (2,5,10)

1. $6 \times 5 = \dots$
2. $10 \times 10 = \dots$
3. $2 \times 10 = \dots$
4. $1 \times 2 = \dots$
5. $0 \times 2 = \dots$
6. $8 \times 5 = \dots$
7. $10 \times 2 = \dots$
8. $3 \times 1 = \dots$
9. $2 \times 5 = \dots$
10. $7 \times 10 = \dots$
11. $8 \times 2 = \dots$
12. $0 \times 5 = \dots$




Additions-soustractions :

1. $12 - \dots = 6$
2. $11 - 4 = \dots$
3. $\dots + 10 = 16$
4. $14 + \dots = 23$
5. $15 + 4 = \dots$
6. $3 + \dots = 12$
7. $\dots + 5 = 13$
8. $11 + \dots = 16$
9. $7 + 6 = \dots$
10. $\dots - 8 = 4$
11. $13 + \dots = 14$
12. $17 - 2 = \dots$

Multiplications : (2,5,10)

1. $5 \times 2 = \dots$
2. $3 \times 10 = \dots$
3. $9 \times 2 = \dots$
4. $9 \times 5 = \dots$
5. $7 \times 2 = \dots$
6. $5 \times 1 = \dots$
7. $4 \times 5 = \dots$
8. $3 \times 2 = \dots$
9. $5 \times 10 = \dots$
10. $1 \times 5 = \dots$
11. $4 \times 1 = \dots$
12. $0 \times 10 = \dots$




 Additions-soustractions :

1. $11 + \dots = 18$
2. $6 + \dots = 8$
3. $11 - 7 = \dots$
4. $15 - \dots = 13$
5. $7 + 4 = \dots$
6. $\dots + 8 = 10$
7. $13 + 2 = \dots$
8. $17 - 5 = \dots$
9. $\dots - 2 = 5$
10. $17 + \dots = 22$
11. $\dots + 9 = 15$
12. $16 - 7 = \dots$

Multiplications :

1. $8 \times 3 = \dots$
2. $3 \times 4 = \dots$
3. $9 \times 7 = \dots$
4. $10 \times 5 = \dots$
5. $3 \times 7 = \dots$
6. $4 \times 6 = \dots$
7. $6 \times 2 = \dots$
8. $6 \times 10 = \dots$
9. $5 \times 6 = \dots$
10. $4 \times 2 = \dots$
11. $5 \times 3 = \dots$
12. $7 \times 6 = \dots$

 Additions-soustractions :

1. $14 + \dots = 22$
2. $6 + 5 = \dots$
3. $16 - \dots = 6$
4. $6 - 3 = \dots$
5. $18 + \dots = 24$
6. $\dots + 10 = 11$
7. $18 - 8 = \dots$
8. $11 + \dots = 15$
9. $4 + \dots = 7$
10. $\dots - 1 = 15$
11. $20 - 1 = \dots$
12. $\dots + 7 = 11$

Multiplications :

1. $6 \times 5 = \dots$
2. $10 \times 9 = \dots$
3. $2 \times 10 = \dots$
4. $9 \times 8 = \dots$
5. $6 \times 3 = \dots$
6. $8 \times 5 = \dots$
7. $6 \times 4 = \dots$
8. $2 \times 7 = \dots$
9. $2 \times 5 = \dots$
10. $7 \times 7 = \dots$
11. $8 \times 6 = \dots$
12. $9 \times 4 = \dots$

Additions-soustractions :

1. $12 - \dots = 6$
2. $11 - 4 = \dots$
3. $\dots + 10 = 16$
4. $14 + \dots = 23$
5. $15 + 4 = \dots$
6. $3 + \dots = 12$
7. $\dots + 5 = 13$
8. $11 + \dots = 16$
9. $7 + 6 = \dots$
10. $\dots - 8 = 4$
11. $13 + \dots = 14$
12. $17 - 2 = \dots$

Multiplications :

1. $7 \times 4 = \dots$
2. $3 \times 9 = \dots$
3. $9 \times 2 = \dots$
4. $9 \times 6 = \dots$
5. $7 \times 2 = \dots$
6. $7 \times 3 = \dots$
7. $4 \times 5 = \dots$
8. $8 \times 8 = \dots$
9. $5 \times 7 = \dots$
10. $8 \times 4 = \dots$
11. $6 \times 3 = \dots$
12. $2 \times 4 = \dots$

