

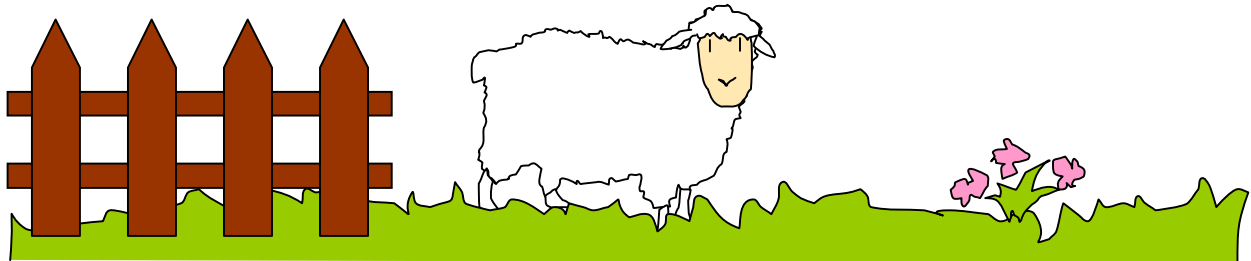
# Calcul mental : fiche 33

© GRé10 / MJ 2014

Effectue ces opérations :

# livrets 2, 10, 5 4P

$8 + 7 =$	$4 - 2 =$	$10 - 6 =$
$12 + 8 =$	$12 - 8 =$	$15 + 5 =$
$10 + 15 =$	$20 - 8 =$	$3 + 5 =$
$15 + 4 =$	$15 - 10 =$	$12 + 5 =$
$20 - 10 =$	$15 - 7 =$	$4 + 4 =$



$8 + 5 =$	$10 - 5 =$	$9 + 8 =$
$3 + 15 =$	$17 - 5 =$	$14 - 5 =$
$7 + 9 =$	$17 - 10 =$	$4 + 9 =$
$17 + 2 =$	$14 + 3 =$	$16 - 8 =$
$15 - 8 =$	$5 + 5 =$	$10 - 5 =$

$4 \times 5 =$	$3 \times 2 =$	$4 \times 2 =$
$6 \times 5 =$	$9 \times 5 =$	$8 \times 5 =$
$7 \times 2 =$	$3 \times 5 =$	$9 \times 2 =$
$2 \times 5 =$	$7 \times 10 =$	$0 \times 5 =$
$8 \times 2 =$	$7 \times 5 =$	$8 \times 2 =$

Quelle heure est-il ?

<p>matin</p> <p>....h ....min</p>		<p>matin</p> <p>....h ....min</p>	
<p>matin</p> <p>....h ....min</p>		<p>matin</p> <p>....h ....min</p>	

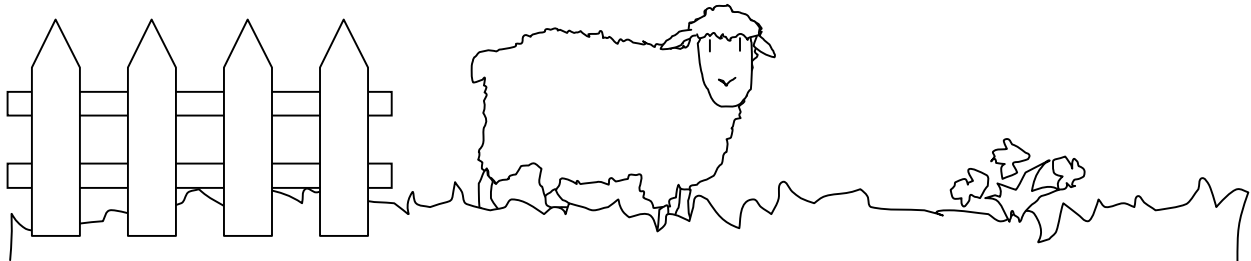
# Calcul mental : fiche 33

© GRé10 / MJ 2014

Effectue ces opérations :

# livrets 2, 10, 5 4P

$8 + 7 =$	$4 - 2 =$	$10 - 6 =$
$12 + 8 =$	$12 - 8 =$	$15 + 5 =$
$10 + 15 =$	$20 - 8 =$	$3 + 5 =$
$15 + 4 =$	$15 - 10 =$	$12 + 5 =$
$20 - 10 =$	$15 - 7 =$	$4 + 4 =$



$8 + 5 =$	$10 - 5 =$	$9 + 8 =$
$3 + 15 =$	$17 - 5 =$	$14 - 5 =$
$7 + 9 =$	$17 - 10 =$	$4 + 9 =$
$17 + 2 =$	$14 + 3 =$	$16 - 8 =$
$15 - 8 =$	$5 + 5 =$	$10 - 5 =$

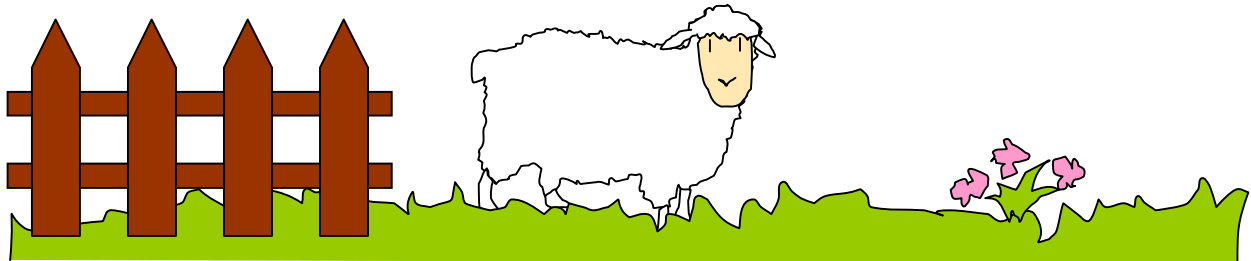
$4 \times 5 =$	$3 \times 2 =$	$4 \times 2 =$
$6 \times 5 =$	$9 \times 5 =$	$8 \times 5 =$
$7 \times 2 =$	$3 \times 5 =$	$9 \times 2 =$
$2 \times 5 =$	$7 \times 10 =$	$0 \times 5 =$
$8 \times 2 =$	$7 \times 5 =$	$8 \times 2 =$

Quelle heure est-il ?

<p>matin</p> <p>....h ....min</p>		<p>matin</p> <p>....h ....min</p>	
<p>matin</p> <p>....h ....min</p>		<p>matin</p> <p>....h ....min</p>	

Effectue ces opérations :

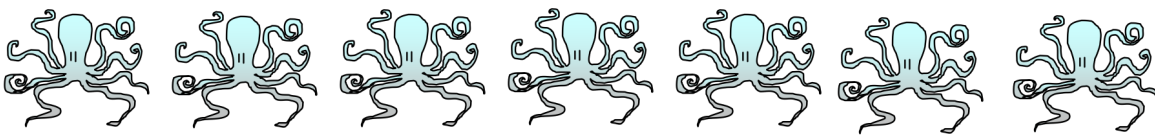
$8 + 7 =$	$4 - 2 =$	$10 - 6 =$
$12 + 8 =$	$12 - 8 =$	$15 + 5 =$
$10 + 15 =$	$20 - 8 =$	$30 + 5 =$
$15 + 15 =$	$15 - 10 =$	$20 + 5 =$
$50 - 10 =$	$50 - 25 =$	$40 + 40 =$



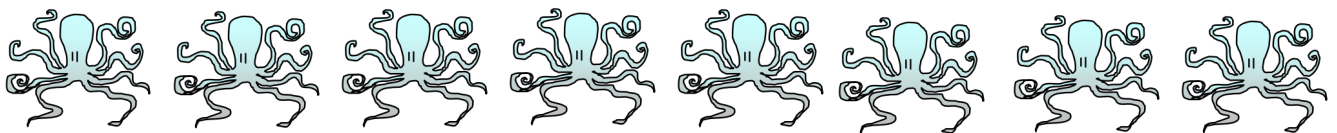
$10 + 5 =$	$10 - 5 =$	$9 + 8 =$
$15 + 15 =$	$20 - 5 =$	$25 - 5 =$
$30 + 20 =$	$30 - 10 =$	$25 + 25 =$
$25 + 5 =$	$25 + 15 =$	$25 - 10 =$
$50 - 45 =$	$50 + 50 =$	$100 - 50 =$

$4 \times 8 =$	$3 \times 6 =$	$3 \times 8 =$
$6 \times 6 =$	$9 \times 5 =$	$8 \times 6 =$
$7 \times 5 =$	$6 \times 6 =$	$9 \times 7 =$
$8 \times 7 =$	$7 \times 7 =$	$4 \times 5 =$
$8 \times 9 =$	$9 \times 3 =$	$9 \times 9 =$

Combien de pattes ont.. ?



sept pieuvres :  $7 \times 8 = \dots\dots\dots$



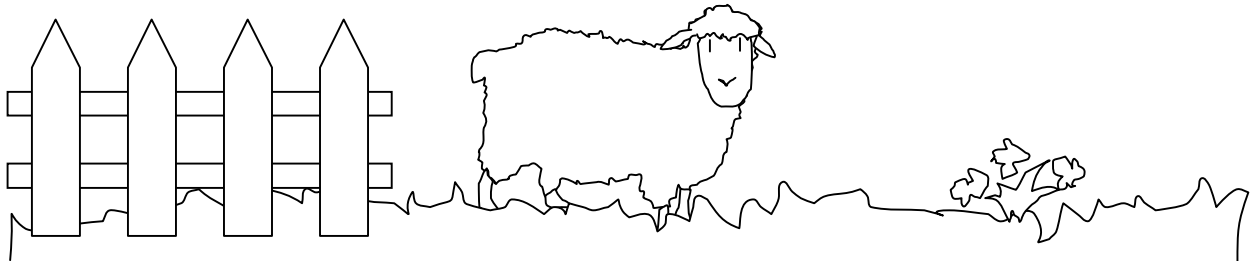
huit pieuvres :  $8 \times 8 = \dots\dots\dots$



neuf pieuvres :  $9 \times 8 = \dots\dots\dots$

Effectue ces opérations :

$8 + 7 =$	$4 - 2 =$	$10 - 6 =$
$12 + 8 =$	$12 - 8 =$	$15 + 5 =$
$10 + 15 =$	$20 - 8 =$	$30 + 5 =$
$15 + 15 =$	$15 - 10 =$	$20 + 5 =$
$50 - 10 =$	$50 - 25 =$	$40 + 40 =$



$10 + 5 =$	$10 - 5 =$	$9 + 8 =$
$15 + 15 =$	$20 - 5 =$	$25 - 5 =$
$30 + 20 =$	$30 - 10 =$	$25 + 25 =$
$25 + 5 =$	$25 + 15 =$	$25 - 10 =$
$50 - 45 =$	$50 + 50 =$	$100 - 50 =$

$4 \times 8 =$	$3 \times 6 =$	$3 \times 8 =$
$6 \times 6 =$	$9 \times 5 =$	$8 \times 6 =$
$7 \times 5 =$	$6 \times 6 =$	$9 \times 7 =$
$8 \times 7 =$	$7 \times 7 =$	$4 \times 5 =$
$8 \times 9 =$	$9 \times 3 =$	$9 \times 9 =$

Combien de pattes ont.. ?



sept pieuvres :  $7 \times 8 = \dots\dots\dots$



huit pieuvres :  $8 \times 8 = \dots\dots\dots$



neuf pieuvres :  $9 \times 8 = \dots\dots\dots$

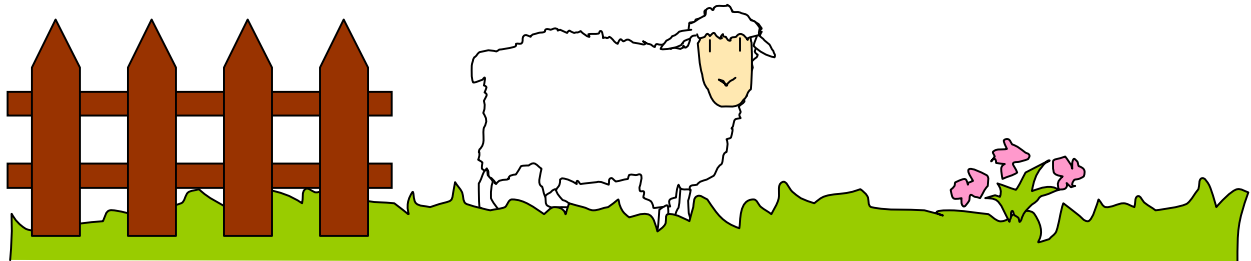
# Calcul mental : fiche 33

6P

© GRe10 / MJ 2014

Effectue ces opérations :

$8 + 7 =$	$4 - 2 =$	$10 - 6 =$
$12 + 8 =$	$12 - 8 =$	$15 + 5 =$
$10 + 15 =$	$20 - 8 =$	$30 + 5 =$
$15 + 15 =$	$15 - 10 =$	$20 + 5 =$
$50 - 10 =$	$50 - 25 =$	$40 + 40 =$



$10 + 5 =$	$10 - 5 =$	$9 + 8 =$
$15 + 15 =$	$20 - 5 =$	$25 - 5 =$
$30 + 20 =$	$30 - 10 =$	$25 + 25 =$
$25 + 5 =$	$25 + 15 =$	$25 - 10 =$
$50 - 45 =$	$50 + 50 =$	$100 - 50 =$

$4 \times 8 =$	$3 \times 6 =$	$3 \times 8 =$
$6 \times 6 =$	$9 \times 5 =$	$8 \times 6 =$
$7 \times 5 =$	$6 \times 6 =$	$9 \times 7 =$
$8 \times 7 =$	$7 \times 7 =$	$4 \times 5 =$
$8 \times 9 =$	$9 \times 3 =$	$9 \times 9 =$

Quelle heure est-il ?

<p>matin</p> <p>.....h .....min</p> <p>après-midi</p> <p>.....h .....min</p>			<p>matin</p> <p>.....h .....min</p> <p>après-midi</p> <p>.....h .....min</p>
<p>matin</p> <p>.....h .....min</p> <p>après-midi</p> <p>.....h .....min</p>			<p>matin</p> <p>.....h .....min</p> <p>après-midi</p> <p>.....h .....min</p>

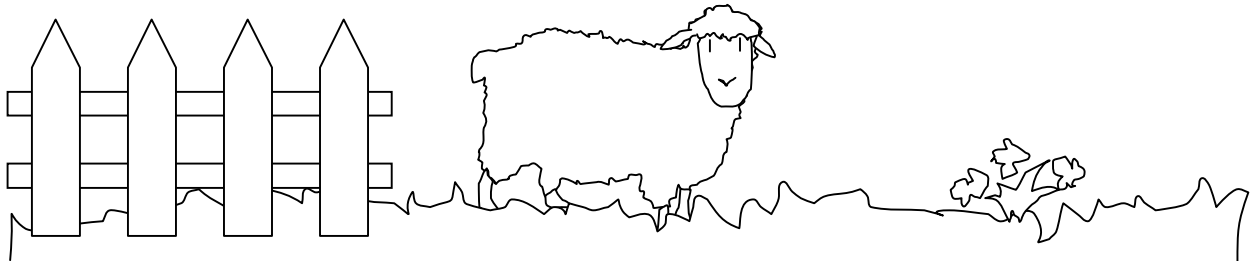
# Calcul mental : fiche 33

6P

© GRe10 / MJ 2014

Effectue ces opérations :

$8 + 7 =$	$4 - 2 =$	$10 - 6 =$
$12 + 8 =$	$12 - 8 =$	$15 + 5 =$
$10 + 15 =$	$20 - 8 =$	$30 + 5 =$
$15 + 15 =$	$15 - 10 =$	$20 + 5 =$
$50 - 10 =$	$50 - 25 =$	$40 + 40 =$



$10 + 5 =$	$10 - 5 =$	$9 + 8 =$
$15 + 15 =$	$20 - 5 =$	$25 - 5 =$
$30 + 20 =$	$30 - 10 =$	$25 + 25 =$
$25 + 5 =$	$25 + 15 =$	$25 - 10 =$
$50 - 45 =$	$50 + 50 =$	$100 - 50 =$

$4 \times 8 =$	$3 \times 6 =$	$3 \times 8 =$
$6 \times 6 =$	$9 \times 5 =$	$8 \times 6 =$
$7 \times 5 =$	$6 \times 6 =$	$9 \times 7 =$
$8 \times 7 =$	$7 \times 7 =$	$4 \times 5 =$
$8 \times 9 =$	$9 \times 3 =$	$9 \times 9 =$

Quelle heure est-il ?

<p>matin</p> <p>.....h .....min</p> <p>après-midi</p> <p>.....h .....min</p>			<p>matin</p> <p>.....h .....min</p> <p>après-midi</p> <p>.....h .....min</p>
<p>matin</p> <p>.....h .....min</p> <p>après-midi</p> <p>.....h .....min</p>			<p>matin</p> <p>.....h .....min</p> <p>après-midi</p> <p>.....h .....min</p>